



The imagination is limitless!

FiBROBETON
PRESENTATION

Executive Summary of Fibrobeton



Key Information

- Fibrobeton Yapı Elemanları San. Ins. Tic. A.S.
- Founded in 1987
- Headquarter: Istanbul, Turkey
- Personnel: 400+
- Other offices: Russia, USA
- Manufacturing facilities: Turkey
- Oldest GRC manufacturer in his region, one of the biggest in the world
- Service and quality oriented
- 3,000+ completed projects, all 100% successfully

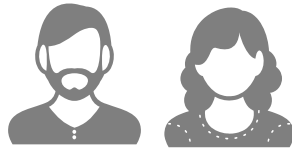


Business

- Business segment: Fiber reinforced precast concrete, polyester, gypsum design, production, application and supervision
- Region's leading precast specialists providing end to end tailormade design, engineering to testing, fabrication, installation
- Product range includes tailormade fiber reinforced precast elements, with special surfaces and needs, all possible colors, textures, surface applications, secondary elements applications if needed also organic and parametric design applications, ventilated façade materials and sun shading systems
- Trusted partner to contractors, architects, investors, suppliers and employees



Human Resources of Fibrobeton



FIBROBETON TOTAL EMPLOYEES: **402**

- Number of Employees : **278**
- Number of Site Managers & Supervisors : **13**
- Number of Designers: **31**
- Number of Production Managers: **22**
- Number of Engineers : **28**
- Number of QA&QC Team: **30**

Experience of Management Team

Management Level	No	Average Working Time in Fibrobeton	Average Age
Top Managers	8	22	47
Managers	20	9	41

Fibrobeton Plant, Düzce Turkey



- ❖ 2. OLDEST GRCA FULL MEMBER
- ❖ PIONEER IN GRC BUSINESS IN HIS REGION
- ❖ 300.000 m² ACTIVE FULLFILLED CAPACITY
- ❖ MORE THAN 3500 PROJECTS IN THE LAST 30 YEARS
- ❖ ONE OF THE BIGGEST INHOUSE LABORATORY





The R-D Center, run by specialists in the Düzce Plant laboratories equipped with the latest technological equipment, is the kitchen of Fibrobeton's indispensable quality and innovative products.

The following are required for the highest quality;

- A good GRC product design, engineering, and façade analysis
- Special testing and experience in the production phase
- Outside daily tests, aging, and external impact strength tests

The test values specified by the customer must be met in all stages of production.



*Fibrobeton received the
Turkish Government's
350th R&D Certificate in
2017.*

WHAT IS GRC?

GRC

(Glass Fiber Reinforced Concrete)

- ❖ Cement
- ❖ Sand (Fine aggregate)
- ❖ Water
- ❖ Additives
- ❖ Minerals
- ❖ AR Glass Fiber

**PRODUCTION METHODS****Spray GRC:**

(32 mm Fiber)

Hand Spray

Automatic Spray

Premix GRC:

(12 mm lif)

Casting

Spray Premix

Other Methods:

Pressing, Tape Plate
Production etc.



Technology

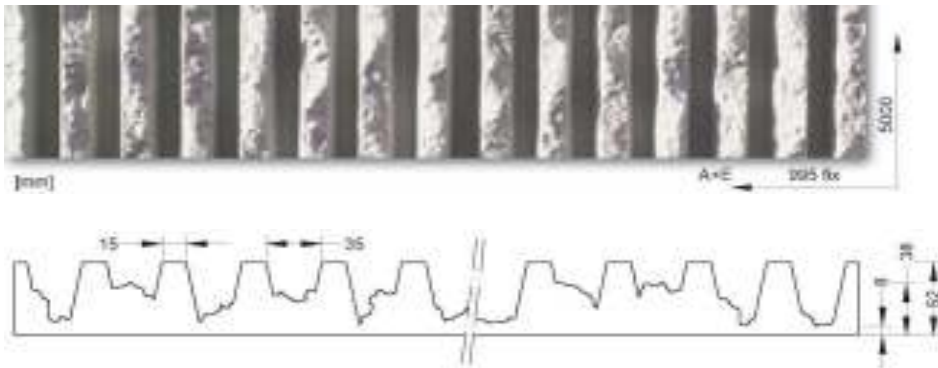
It's possible to obtain colored concrete products by incorporating up to 4% inorganic pigments into the mix at the time of production.

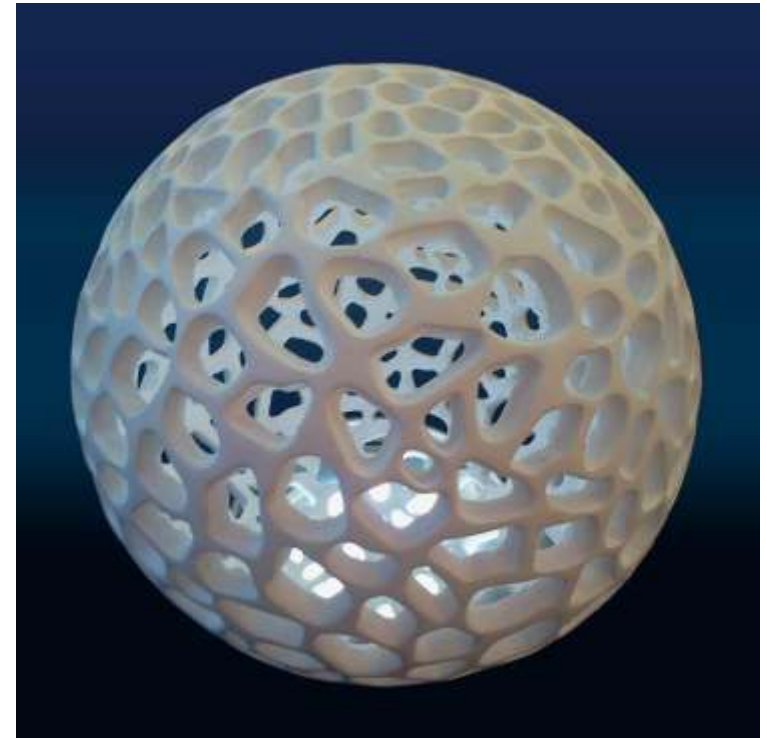


GRC PROPERTIES / TEXTURED CONCRETE



- ❖ Mold Technology
- ❖ Flexible and surface textured molds
- ❖ Rigid Molds
- ❖ Natural and man-made surface textures
- ❖ Geometric, linear, deep, thin, digital, wooden textures





GRC is a fluid, flexible, durable and beautiful material that offers very special possibilities to designers. It can produce organic and dynamic shapes, making it preferable for making difficult forms.

From wood to steel, plastic to fabric, any material can be used to give shape to GRC. With the development of digital design possibilities, it's the easier to create patterns for organic and non-repeating forms. This is why GRC has become a material that architects return to time and time again for façades.

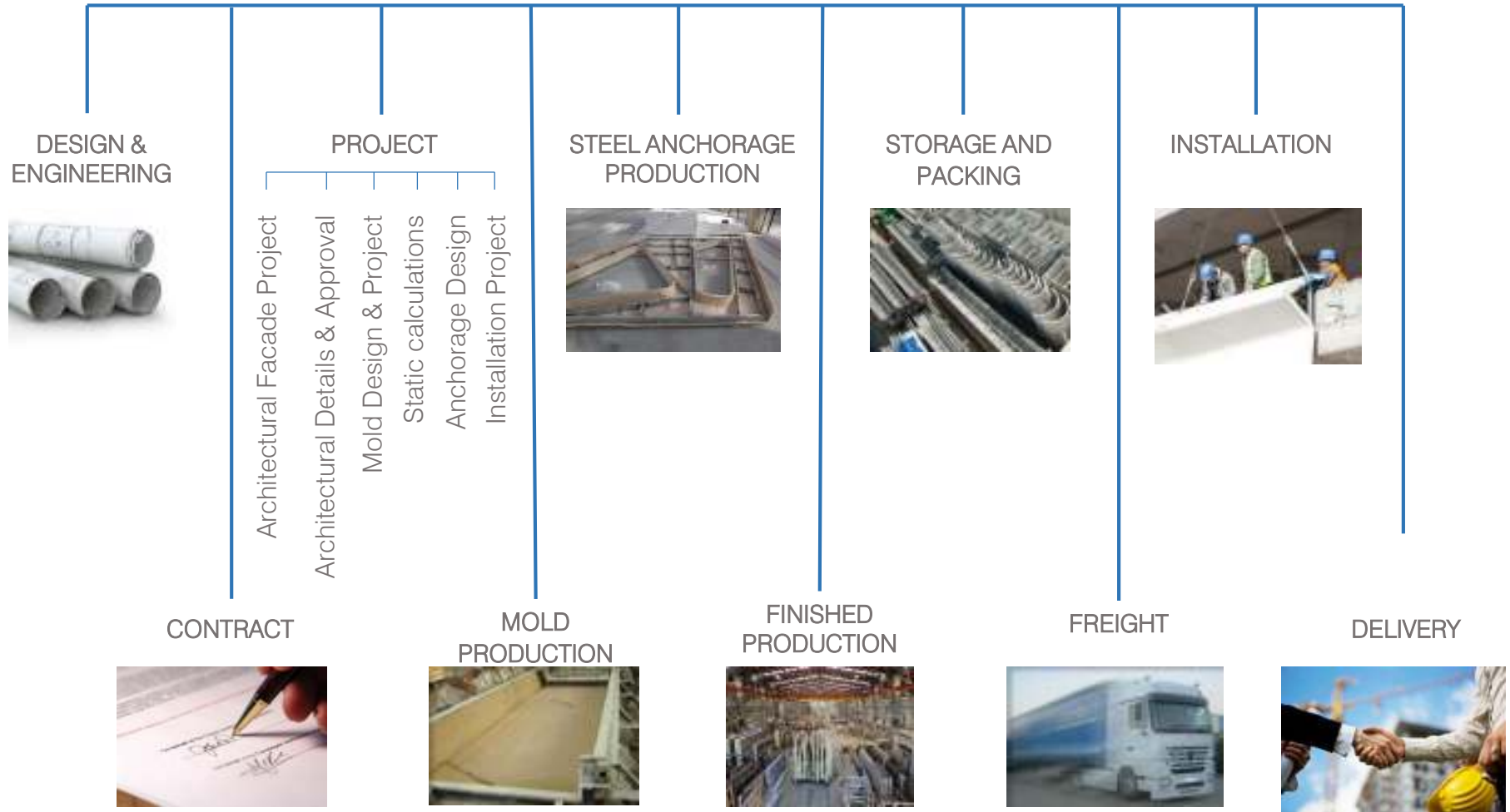
Form GRC can be used with other surface properties (*color, textured, reduced surfaces, etc.*).



For prefabricated systems, dimensions are determined in accordance with process specifications or technical limitations on handling and assembly. Another factor in the facade coatings are architectural preferences and aesthetic choices.

Its possible to make precast panels up to a height of 3.7 m or a width of up to 11 m in length to be transported by specially designed attractors. Product dimensions are determined entirely on a project-by-project basis, based on economic and technical limitations.

WORK CHART



FIBROBETON PRODUCTS

FIBROBETON®

*Stud-Framed Curtain Wall
Panels*

**FIBROFOMBETON®**

*Thermally Insulated Facade
Systems*

**FIBROBETON DECORATIVE®**

Decorative Building Elements



FIBROBETON PRODUCTS

FIBRO-MULTIFORM®*Special Design Applications***FIBROCEPHE® / FIBROPANEL®***Unitized Panel Systems***FIBRO-M®***Ultra High Performance Concrete
Facades*

FIBROBETON PRODUCTS

FIBRO-T®*Self Cleaning Concrete***FIBROLIGHT®***Sun Screens***FIBRONIT®***3D GFRG Wall Panels*

FIBROBETON PRODUCTS

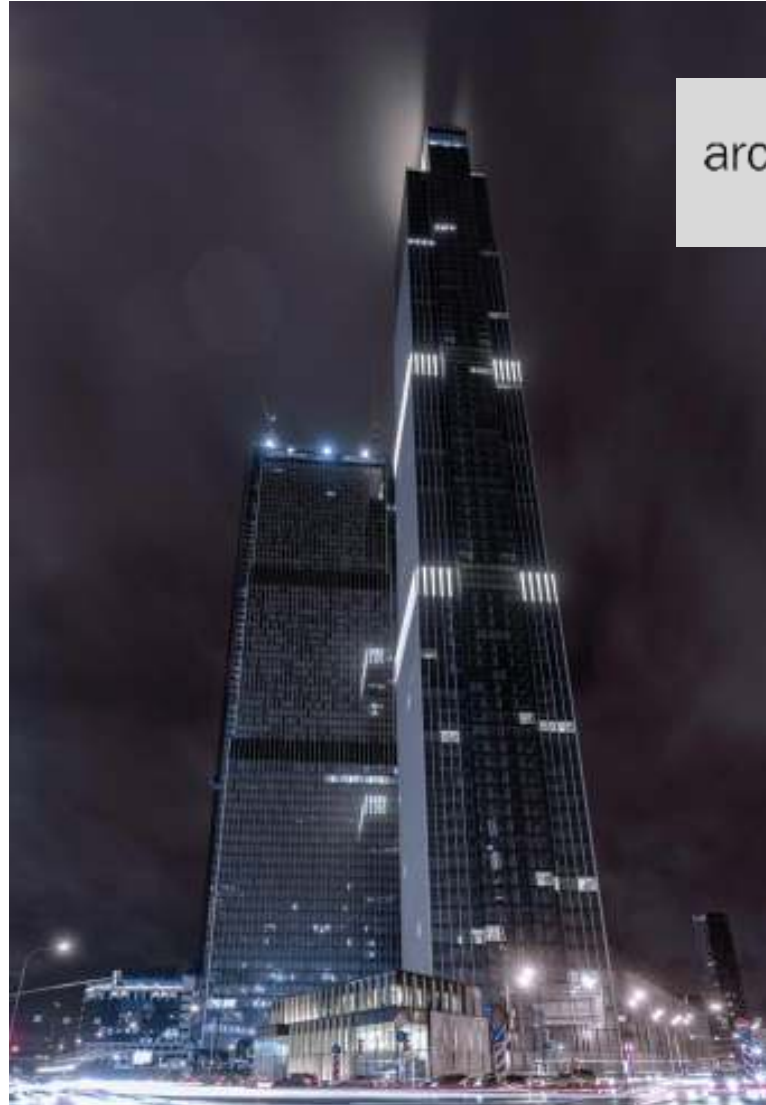
ESCOFET*Turkey Distributor***FIBROFILL®***Fibrobeton Lamel***FIBRO-TRANSBETON®***Translucent Concrete***FIBROSTONE®***Textured Facade Coatings***FIBROBARIYER®***Noise Barrier*



Concrete Facade Application Photos



NEVA TOWERS / MOSCOW-RUSSIA



arch:speech



NEVA TOWERS / MOSCOW-RUSSIA





NEVA TOWERS / MOSCOW-RUSSIA





NEVA TOWERS / MOSCOW-RUSSIA

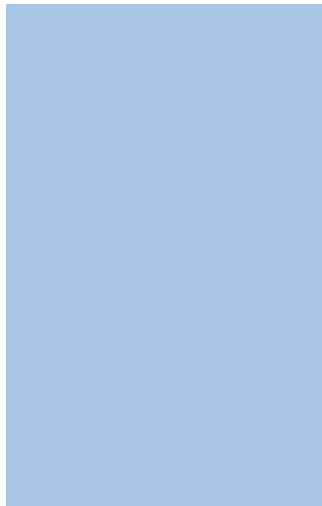




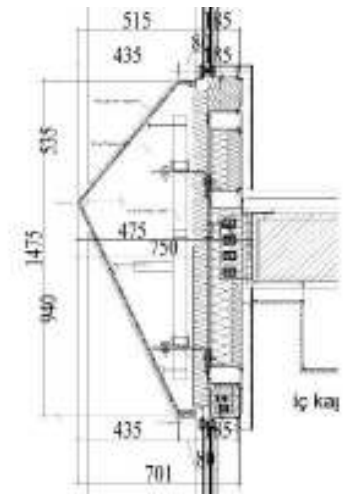
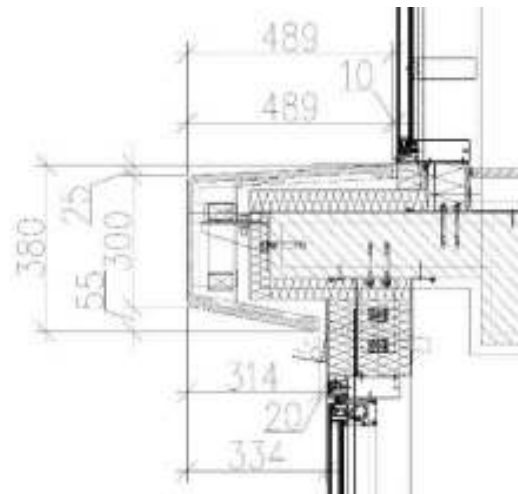
MOMENT BEŞTEPE /ANKARA-TURKEY



MOMENT BEŞTEPE /ANKARA-TURKEY



MOMENT BEŞTEPE /ANKARA-TURKEY



COS /ISTANBUL-TURKEY





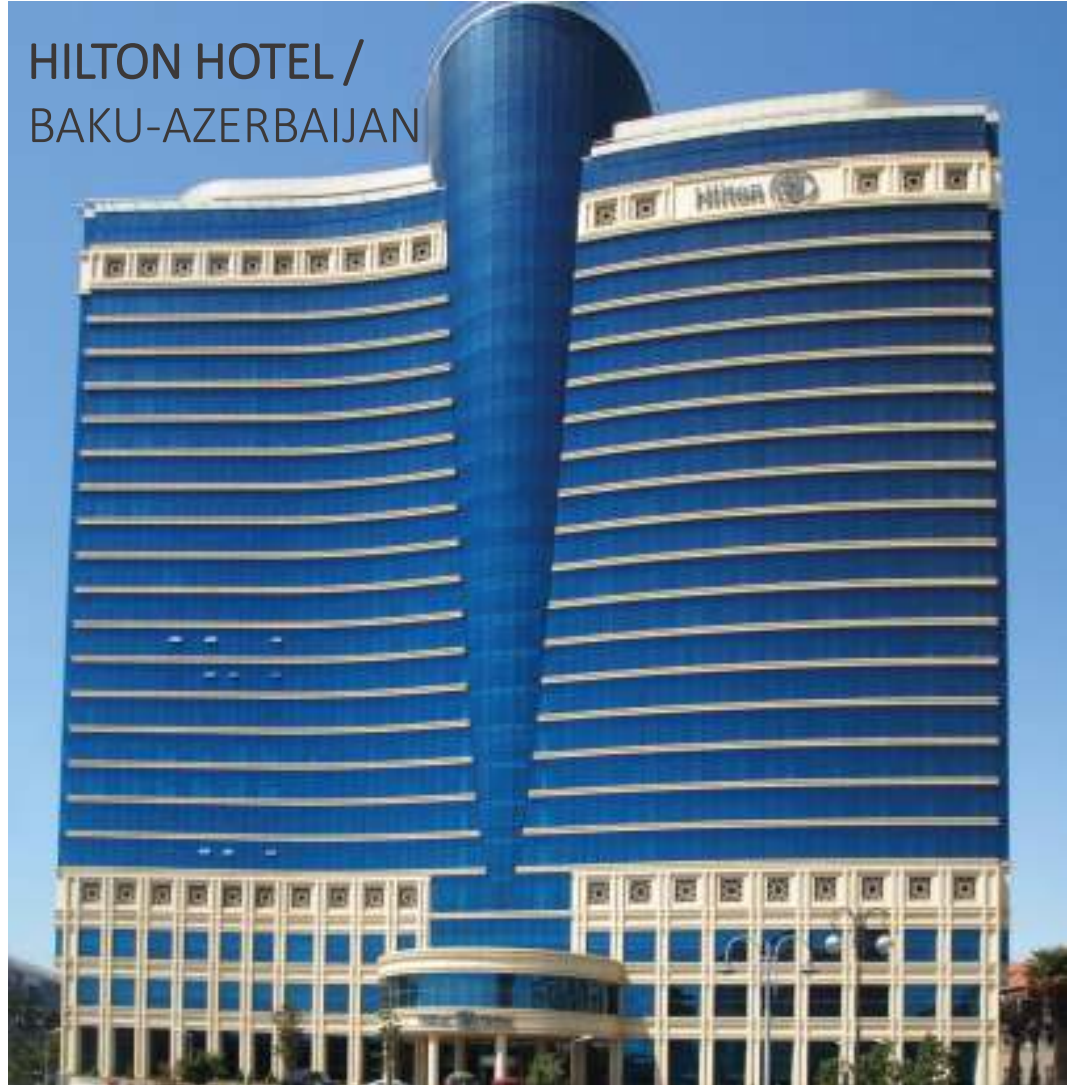
WORLD GRC CONGRESS, 2011 WORLD'S
MOST SUCCESSFUL GRC PROJECT:
Capital Hill-Moscow / Fibrobeton

The challenging project of famous architect
Zaha Hadid, Capital Hill in Moscow Russia,
completed using **Fibro-Multiform®**.





HILTON HOTEL /
BAKU-AZERBAIJAN





**YAVUZ SULTAN SELİM
BRIDGE
İSTANBUL/TURKEY**



YAVUZ SULTAN SELİM BRIDGE / İSTANBUL-TURKEY



ANTHILL RESIDENCE/ ISTANBUL-TURKEY





ANTHILL RESIDENCE/
ISTANBUL-TURKEY



ISTMARINA / ISTANBUL-TURKEY





ISTMARINA /
ISTANBUL-TURKEY



ISTMARINA ISTANBUL/TURKEY



PENDORYA SHOPPING MALL/ ISTANBUL-TURKEY

ERGİNOĞLU & ÇALIŞLAR





CANELETTO / LONDON





CANELETTO / LONDON



GHENT DIAMAND / BELGIUM



ASYMPTOTES



GHENT DIAMAND / BELGIUM





EAST VILLAGE NO6 / LONDON

Hawkins\Brown



EAST VILLAGE NO6 / LONDON



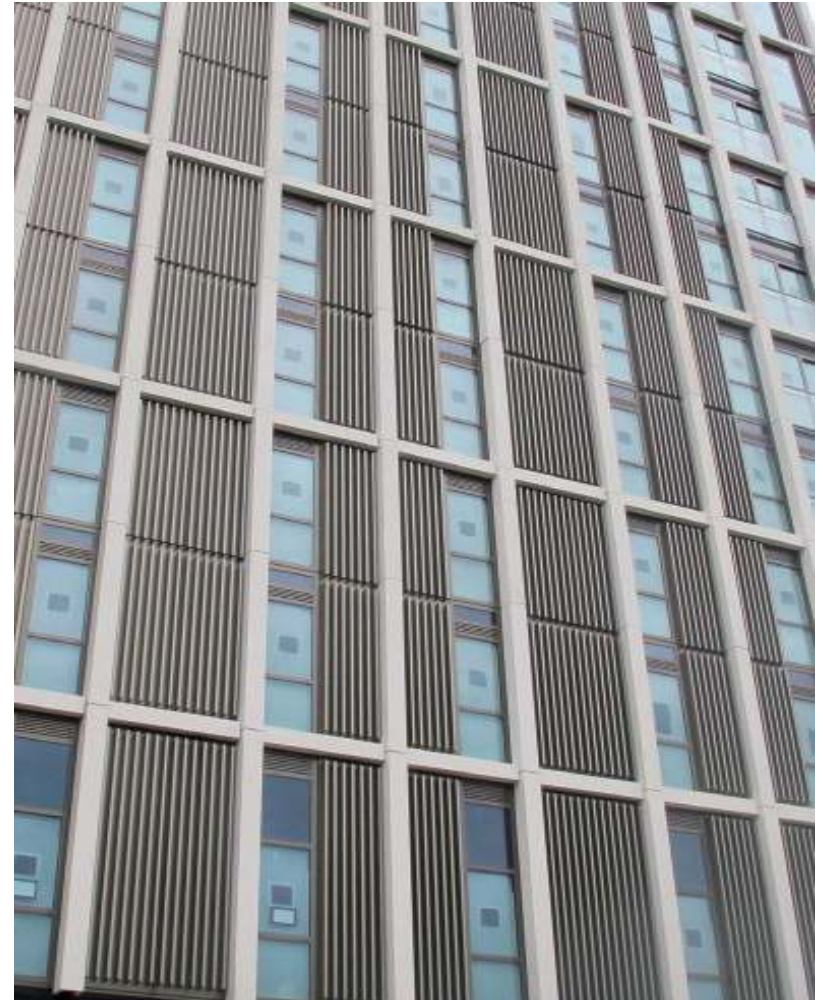
JUSTICE HOUSE / GORI





EAST VILLAGE NO 8 / LONDON

Lifschutz
Davidson
Sandilands





ONE AND ONLY HOTEL / MONTE NEGRO

D E N N I S T O N



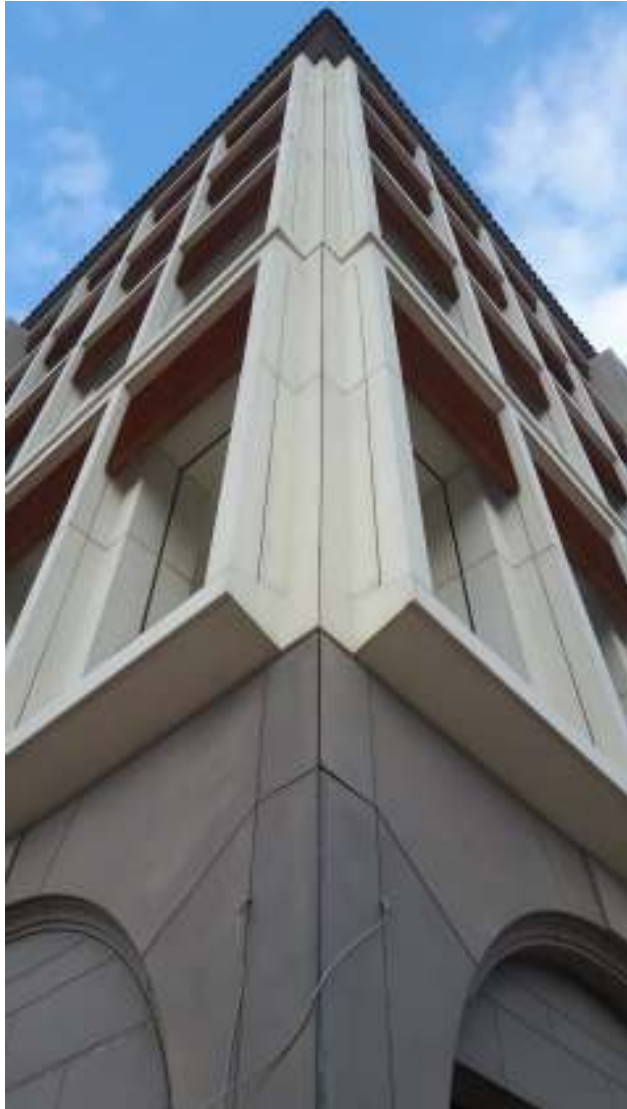


ONE AND ONLY HOTEL/MONTE NEGRO





ONE AND ONLY HOTEL/MONTE NEGRO



GIRESUN STADIUM / TURKEY



GIRESUN STADIUM / TURKEY





LUZHNIKI SWIMMING POOL / MOSCOW

UNK
project



LUZHNIKI SWIMMING POOL / MOSCOW





LUZHNIKI SWIMMING POOL / MOSCOW





PRIMEMALL SHOPPING MALL / TURKEY

ERGİNOĞLU & ÇALIŞLAR



BNP PARIBAS FORTIS / BRUSSELS-BELGIUM



BNP PARIBAS FORTIS / BRUSSELS-BELGIUM

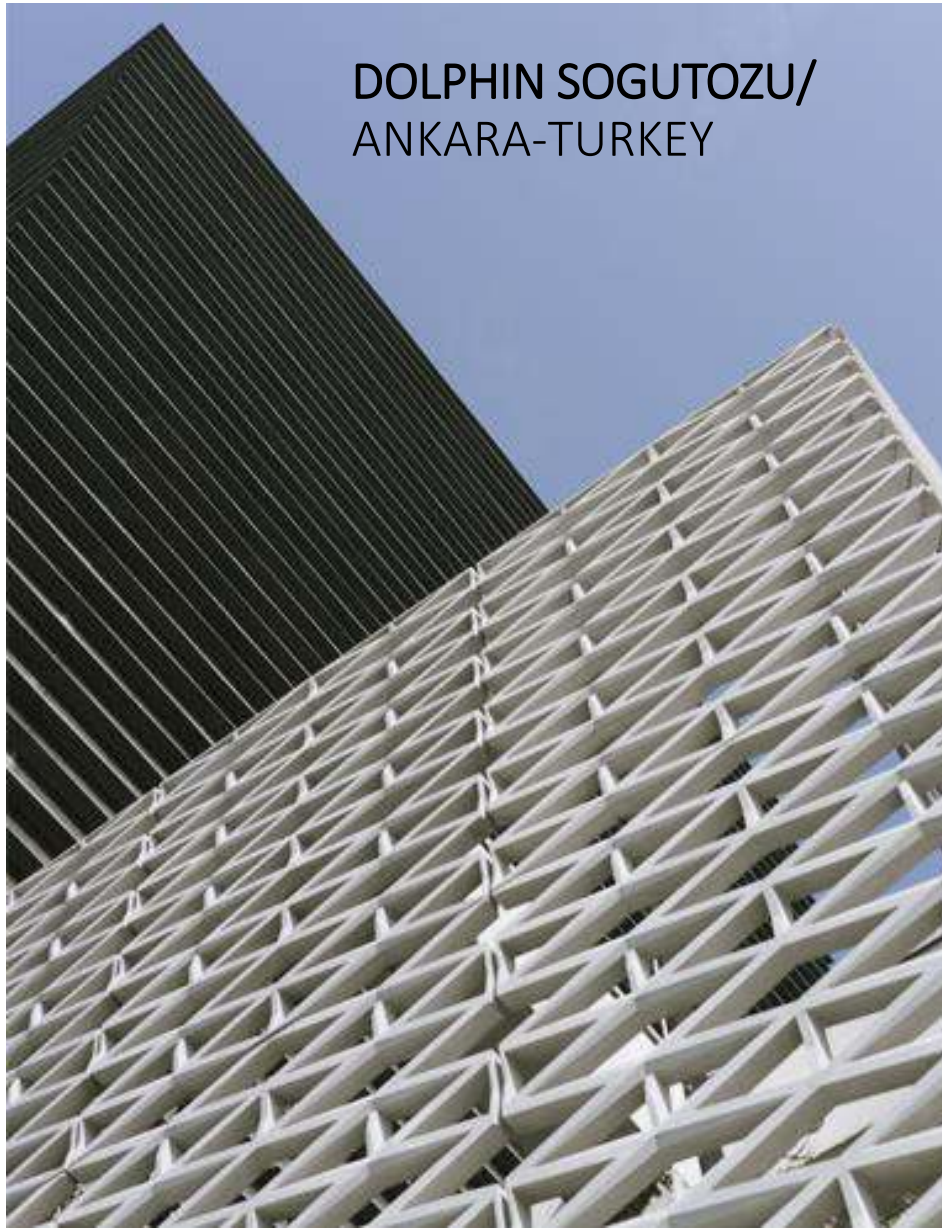


BNP PARIBAS FORTIS / BRUSSELS-BELGIUM





**DOLPHIN SOGUTOZU/
ANKARA-TURKEY**



aw





**ALTUNIZADE MOSQUE/
ISTANBUL-TURKEY**

**H
ASA** HASSA MİMARLIK





ARTER MUSEUM/
ISTANBUL-TURKEY

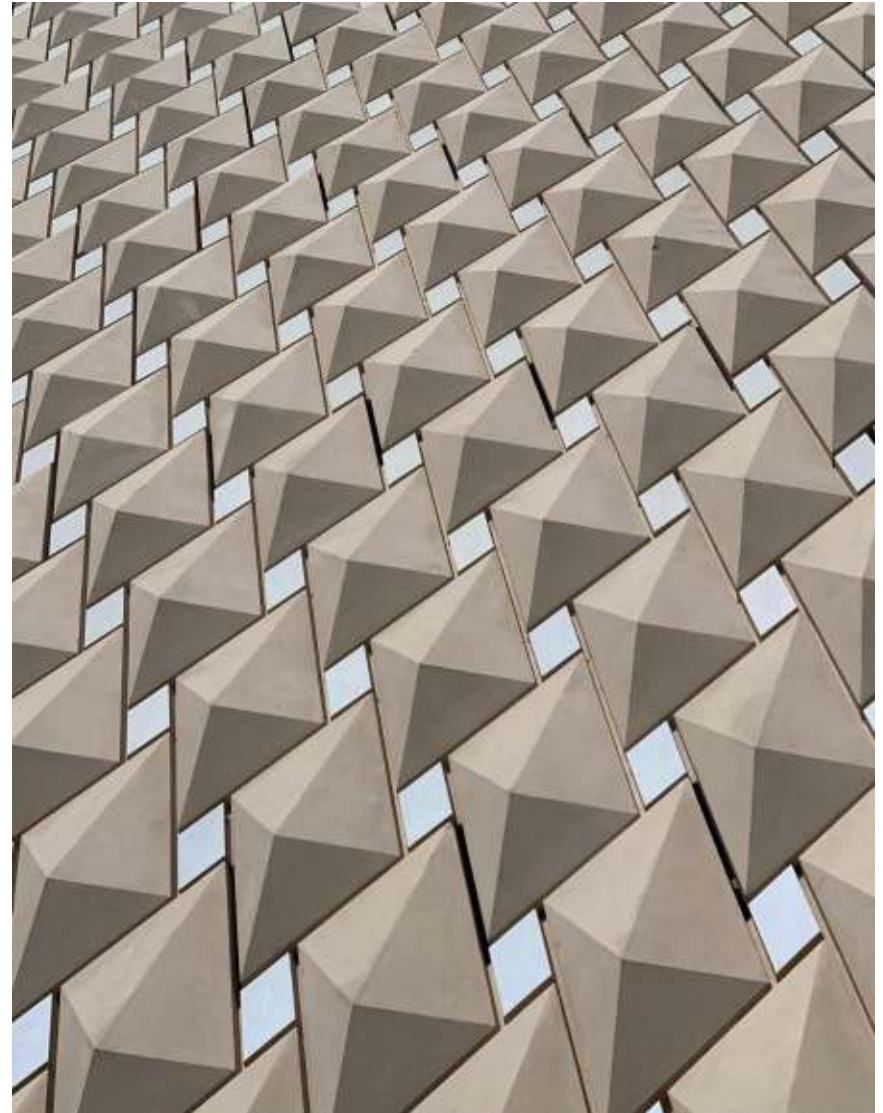
GRIMSHAW



ARTER MUSEUM / ISTANBUL-TURKEY



ARTER MUSEUM / ISTANBUL-TURKEY



CHINESE CULTURAL CENTER / BELGRADE-SERBIA



25.06.2019





MERCURY TOWER/ MALTA





LISI GREEN TOWER / TBLISI-GEORGIA



LISI GREEN TOWER / TBLISI-GEORGIA



FINSBURY TOWER / LONDON



FINSBURY TOWER / LONDON



FINSBURY TOWER / LONDON





GALATAPORT / TURKEY





GALATAPORT / TURKEY





EXCLUSIVELY DEVELOPED & SUPPORTED DESIGNS



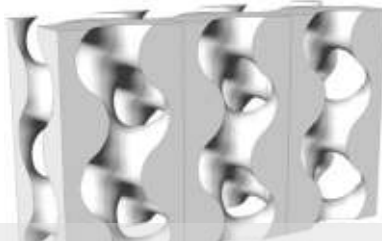
Solar Decathlon Africa 2019 Morocco



Hope On Water

SO? architecture practice designed Fold&Float, a foldable floating house that could be the answer to a housing emergency following an earthquake disaster in Istanbul





COMMUNE-ACTION WALLS Project
Authors: Fulya Özsel Akipek, Tuğrul Yazar,
Bilgi Uni. Faculty of Architecture. Teaching
Members

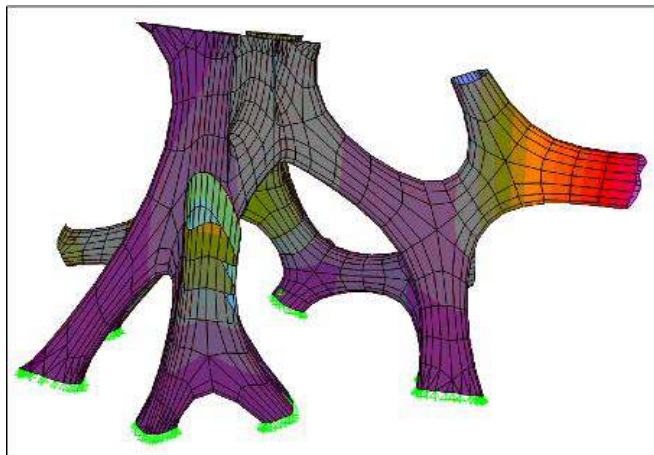
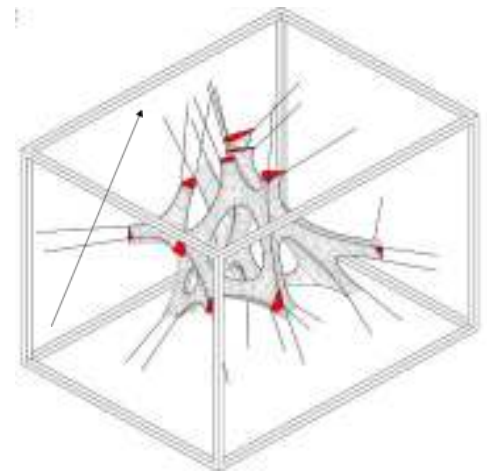
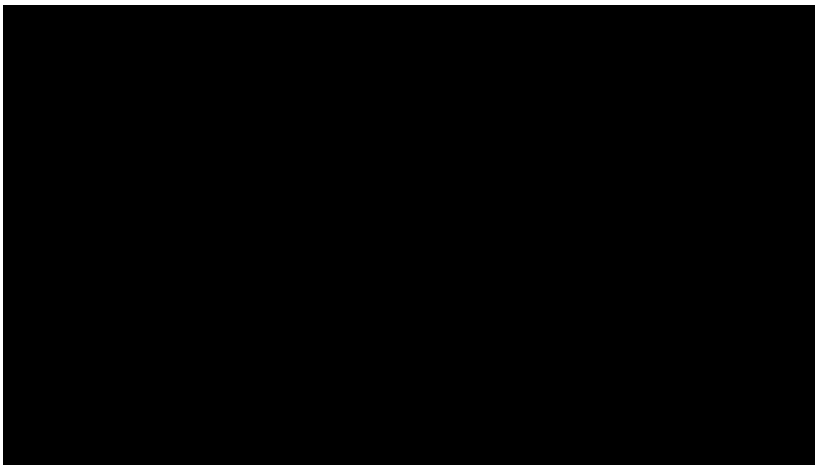


**MOTION IN THE SHELL -
MOVEMENT IN THE SHELL**
Design and Application: Melike Altınışık



ALVEOSIS Concrete Rhizome Shell

Nilüfer Kozikoğlu and Urban Workshop Team



SAP2000 19.1.1 Deformed Shape (COMB1) N, mm, C

MATERIALS

GRC

GRG

GRP

UHPC

BRANDS

 FIBROBETON®

    FIBRODECORATIVE®

 FIBROFOMBETON®

 FIBRO-T®

 FIBRO-M®

    FIBRO-MULTIFORM®

 FIBROBARIYER®

    FIBROFILL®

    FIBROLIGHT®

  FIBROCEPHE®/FIBROPANEL®

 FIBRONIT®

FIBRO-TRANSBETON®

 FIBROSHIELD®

 FIBROSTONE®

2001 GRCA MERIT AWARD

FIRST INTERNATIONAL AWARD IN GRC SECTOR

Our patented innovative product is the first Turkish company to win the GRCA Merit Award using our Heat Insulated Fibrofombeton®.

2001 BEST PROJECT:
Metrocity / Fibrobeton

2015 GRCA OUTSTANDING PROJECT AWARD

INTERNATIONAL AWARD IN GRC SECTOR

We received the GRCA Outstanding Project Award with PrimeMall Shopping Mall. A project where we applied our patented innovative technology, Fibro-Multiform® in the 17th World GRC Congress in Dubai.

2015 BEST PROJECT:
PrimeMall / Fibrobeton



2011 GRCA MERIT AWARDS

THE FIRST FIRM IN THE WORLD TO WIN ALL THREE AWARDS PRESENTED IN THE SAME YEAR

Fibrobeton was the first company to win three of the three awards given at the 16th World GRC Congress in Istanbul, where 160 delegates from various countries participated.

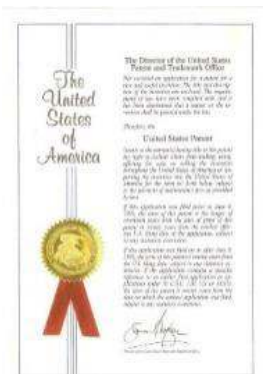
WORLD MOST CONTRIBUTOR TO SECTOR: Fibrobeton Founding Honorary President Ayhan Babacan

THE MOST SUCCESSFUL GRC COMPANY IN THE WORLD: Fibrobeton

THE MOST SUCCESSFUL GRC PROJECT IN THE WORLD: Capital Hill (Zaha Hadid Architects) Fibrobeton



QUALITY / MEMBERSHIP DOCUMENTS





www.fibrobeton.com.tr

fibrobeton@fibrobeton.com.tr

The imagination is limitless!



instagram: @fibrobetonyapi

UZKA İŞ MERKEZİ, ERTÜRK SOKAK
NO: 11 34810 KAVACIK - İSTANBUL

+90 216 693 04 04

www.fibrobeton.com.tr